



Revisions		<div><div>Key</div><div><div><div></div></div>Area to be demolished</div><div><div></div></div>Retained</div> <div><div></div></div> Structure	Copyright Hawkins Brown Architects LLP		Job Number	Date	Scale	Project	159 St John Street London EC1V 4QJ mail@hawkinsbrown.com hawkinsbrown.com
PL01 28.11.2016 Issued for Planning			No implied license exists. This drawing should not be used to calculate areas for the purposes of valuation. Do not scale this drawing. All dimensions to be checked on site by the contractor and such dimensions to be their responsibility. All work must comply with relevant British Standards and Building Regulations requirements. Drawing errors and omissions to be reported to the architect.		HB1641	Nov 2016	1:200 (A1)	Regents Wharf N1, Islington	
					Drawn by	Checked by	Status	Drawing	
					OT	EG	Planning	Strip Out Drawing	
				Drawing No. & Revision			Ground Floor Plan		Hawkins\Brown
				RWG-HBA-00-00-DR-A-PL01-0101					



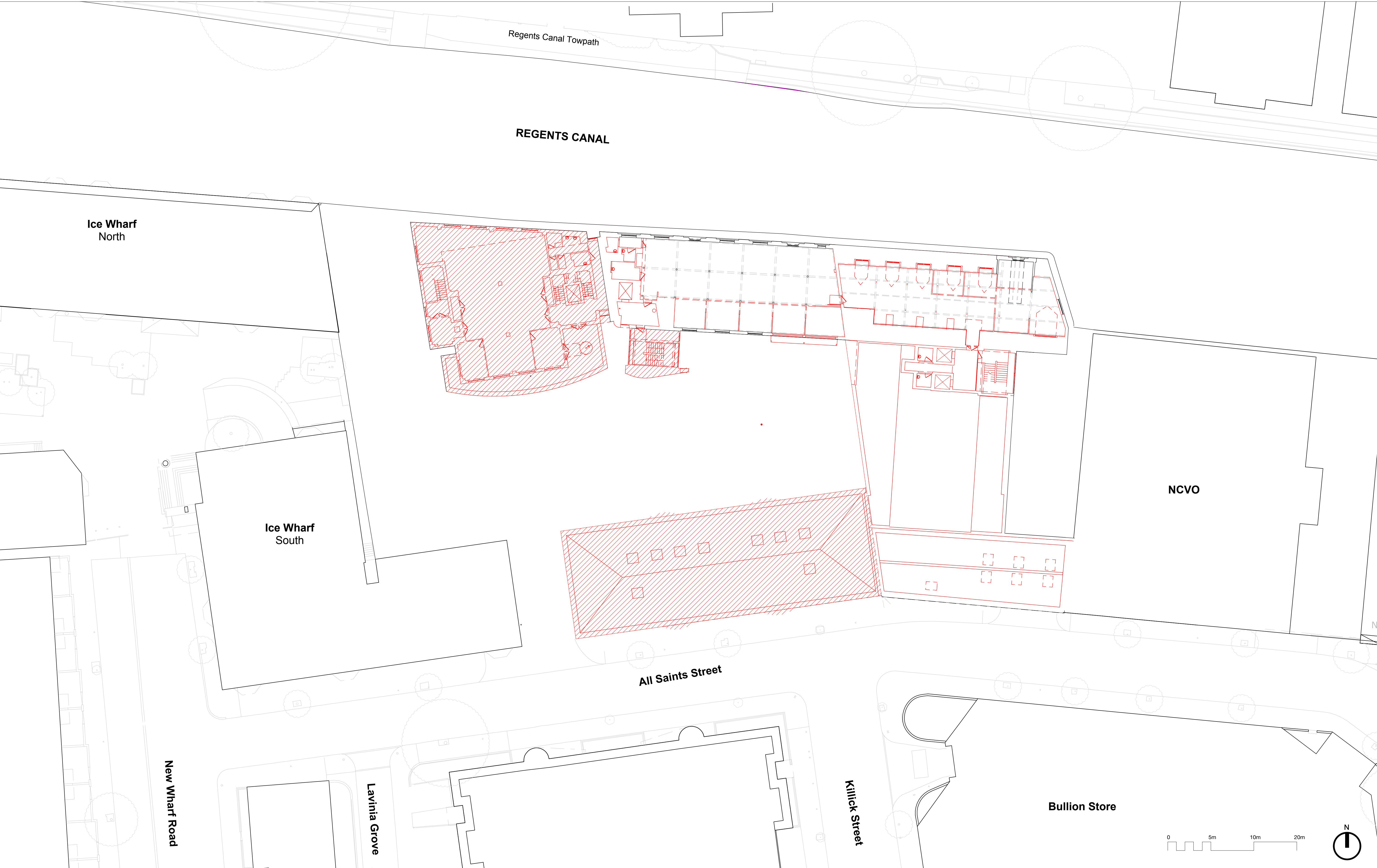
<div>Revisions</div> <div>PL01 28.11.2016 Issued for Planning</div>		<div>Key</div> <div><div></div>Area to be demolished</div> <div><div></div>Retained</div> <div><div></div>Structure</div>		<div>Copyright Hawkins Brown Architects LLP</div> <div>No implied license exists. This drawing should not be used to calculate areas for the purposes of valuation. Do not scale this drawing. All dimensions to be checked on site by the contractor and such dimensions to be their responsibility. All work must comply with relevant British Standards and Building Regulations requirements. Drawing errors and omissions to be reported to the architect.</div>		<div>Job Number</div> <div>HB1641</div> <div>Drawn by</div> <div>OT</div> <div>Drawing No. & Revision</div> <div>RWG-HBA-00-01-DR-A-PL01-0102</div>	<div>Date</div> <div>Nov 2016</div> <div>Checked by</div> <div>EG</div>	<div>Scale</div> <div>1:200 (A1)</div> <div>Status</div> <div>Planning</div>	<div>Project</div> <div>Regents Wharf N1, Islington</div> <div>Drawing</div> <div>Strip Out Drawing First Floor Plan</div>	<div>159 St John Street London EC1V 4QJ</div> <div>mail@hawkinsbrown.com hawkinsbrown.com</div> <div>HawkinsBrown</div>
---	--	---	--	---	--	---	---	--	--	---



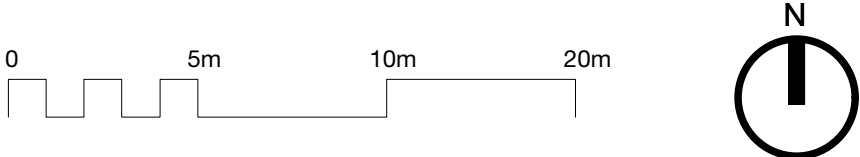
Revisions		<div><div>Key</div><div><div><div><div></div></div></div><div>Area to be demolished</div><div><div><div></div></div></div><div>Retained</div><div><div><div></div></div></div><div>Structure</div></div></div>	Copyright Hawkins Brown Architects LLP	Job Number	Date	Scale	Project Regents Wharf N1, Islington	159 St John Street London EC1V 4QJ mail@hawkinsbrown.com hawkinsbrown.com	<div>Hawkins Brown</div>
PL01 28.11.2016 Issued for Planning			No implied license exists. This drawing should not be used to calculate areas for the purposes of valuation. Do not scale this drawing. All dimensions to be checked on site by the contractor and such dimensions to be their responsibility. All work must comply with relevant British Standards and Building Regulations requirements. Drawing errors and omissions to be reported to the architect.	HB1641	Nov 2016	1:200 (A1)			
				Drawn by	Checked by	Status			
				OT	EG	Planning			
			Drawing No. & Revision			Drawing Strip Out Drawing Second Floor Plan			
			RWG-HBA-00-02-DR-A-PL01-0103						



Revisions		<div><div>Key</div><div><div><div></div></div>Area to be demolished</div><div><div></div></div>Retained</div> <div><div></div></div> Structure	Copyright Hawkins Brown Architects LLP		Job Number	Date	Scale	Project Regents Wharf N1, Islington
PL01 28.11.2016 Issued for Planning			No implied license exists. This drawing should not be used to calculate areas for the purposes of valuation. Do not scale this drawing. All dimensions to be checked on site by the contractor and such dimensions to be their responsibility. All work must comply with relevant British Standards and Building Regulations requirements. Drawing errors and omissions to be reported to the architect.		HB1641	Nov 2016	1:200 (A1)	
					Drawn by	Checked by	Status	
					OT	EG	Planning	
					Drawing No. & Revision			Drawing Strip Out Drawing Third Floor Plan
				RWG-HBA-00-03-DR-A-PL01-0104				
							159 St John Street London EC1V 4QJ mail@hawkinsbrown.com hawkinsbrown.com	
							Hawkins Brown	



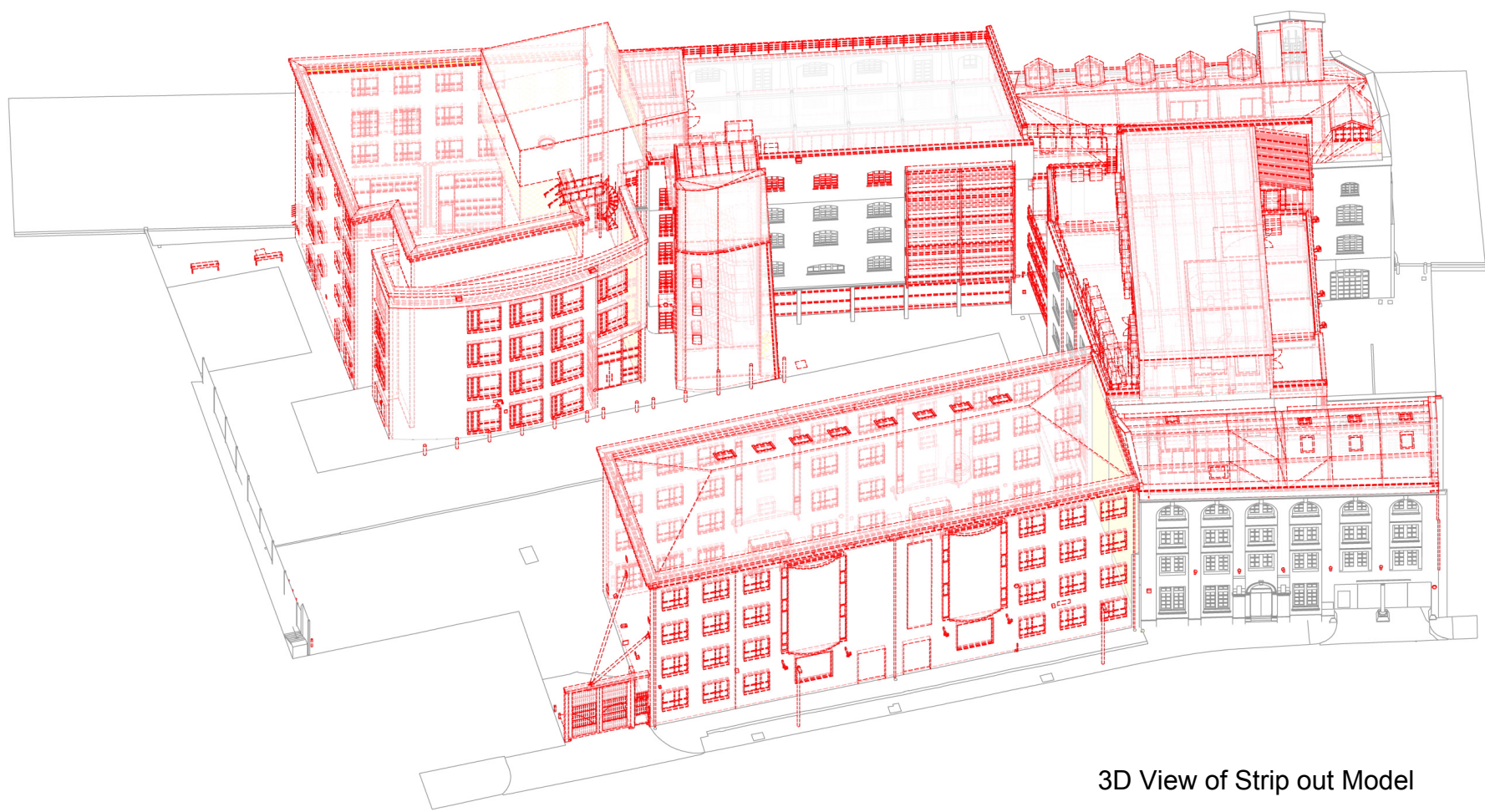
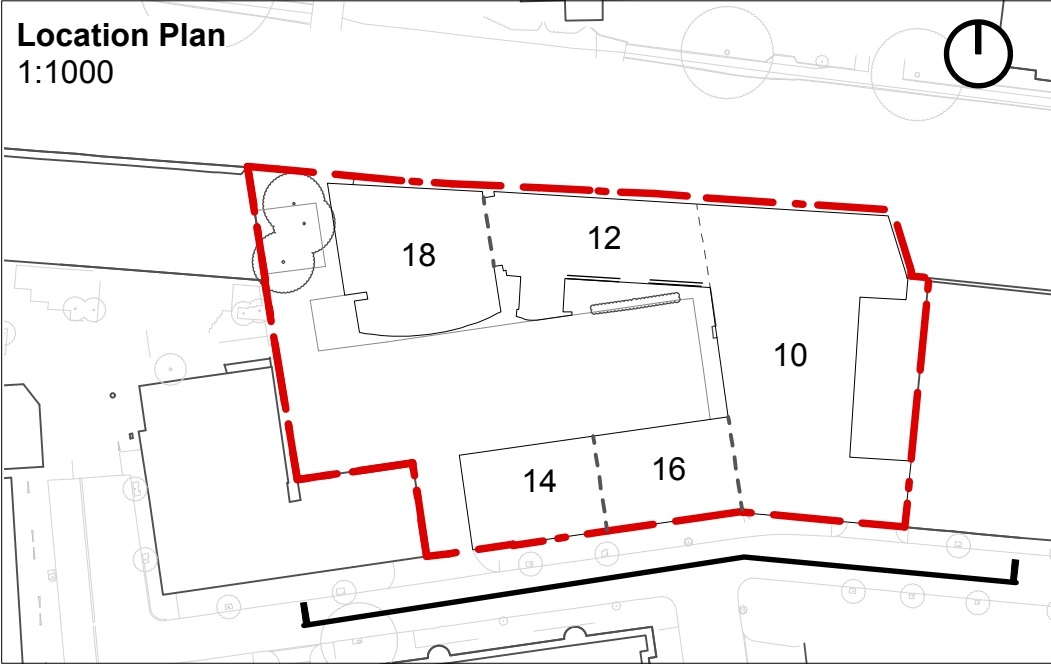
Revisions		<div><div>Key</div><div><div><div></div></div>Area to be demolished</div><div><div></div></div>Retained</div> <div><div></div></div> Structure	Copyright Hawkins Brown Architects LLP	Job Number	Date	Scale	Project	159 St John Street London EC1V 4QJ mail@hawkinsbrown.com hawkinsbrown.com	<div>Hawkins Brown</div>
PL01 28.11.2016 Issued for Planning			No implied license exists. This drawing should not be used to calculate areas for the purposes of valuation. Do not scale this drawing. All dimensions to be checked on site by the contractor and such dimensions to be their responsibility. All work must comply with relevant British Standards and Building Regulations requirements. Drawing errors and omissions to be reported to the architect.	HB1641	Nov 2016	1:200 (A1)	Regents Wharf N1, Islington		
				Drawn by	Checked by	Status	Drawing		
				OT	EG	Planning	Strip Out Drawing Fourth Floor Plan		
				Drawing No. & Revision					
				RWG-HBA-00-04-DR-A-PL01-0105					



Revisions		<div><div>Key</div><div><div><div></div></div>Area to be demolished</div><div><div><div></div></div>Retained</div><div><div><div></div></div>Structure</div></div>	Copyright Hawkins Brown Architects LLP	Job Number	Date	Scale	Project	159 St John Street London EC1V 4QJ mail@hawkinsbrown.com hawkinsbrown.com	<div>HawkinsBrown</div>
PL01 28.11.2016 Issued for Planning			No implied license exists. This drawing should not be used to calculate areas for the purposes of valuation. Do not scale this drawing. All dimensions to be checked on site by the contractor and such dimensions to be their responsibility. All work must comply with relevant British Standards and Building Regulations requirements. Drawing errors and omissions to be reported to the architect.	HB1641	Nov 2016	1:200 (A1)	Regents Wharf N1, Islington		
			Drawn by	Checked by	Status	Drawing			
			OT	EG	Planning	Strip Out Drawing Basement Plan			
			Drawing No. & Revision						
			RWG-HBA-00-B1-DR-A-PL01-0100						



Revisions		<div><div>Key</div><div><div><div><div></div></div></div><div>Area to be demolished</div><div><div><div></div></div></div><div>Retained</div><div><div><div></div></div></div><div>Structure</div></div></div>	Copyright Hawkins Brown Architects LLP		Job Number	Date	Scale	Project	<div>159 St John Street London EC1V 4QJ mail@hawkinsbrown.com hawkinsbrown.com</div> <div>Hawkins\Brown</div>
PL01 28.11.2016 Issued for Planning			No implied license exists. This drawing should not be used to calculate areas for the purposes of valuation. Do not scale this drawing. All dimensions to be checked on site by the contractor and such dimensions to be their responsibility. All work must comply with relevant British Standards and Building Regulations requirements. Drawing errors and omissions to be reported to the architect.		HB1641	Nov 2016	1:200 (A1)	Regents Wharf N1, Islington	
					Drawn by	Checked by	Status	Drawing	
					OT	EG	Planning	Strip Out Drawing	
					Drawing No. & Revision			Roof Plan	
					RWG-HBA-00-RF-DR-A-PL01-0106				



3D View of Strip out Model



Revisions

PL01 28.11.2016 Issued for Planning

Key

- Area to be demolished
- Retained
- Structure

Copyright Hawkins Brown Architects LLP

No implied license exists. This drawing should not be used to calculate areas for the purposes of valuation. Do not scale this drawing. All dimensions to be checked on site by the contractor and such dimensions to be their responsibility. All work must comply with relevant British Standards and Building Regulations requirements. Drawing errors and omissions to be reported to the architect.

Job Number

HB1641

Drawn by

OT

Drawing No. & Revision

RGW-HBA-00-XX-DR-A-PL01-0200

Date

Nov 2016

Checked by

EG

Scale

1:200 (A1)

Status

Planning

Project

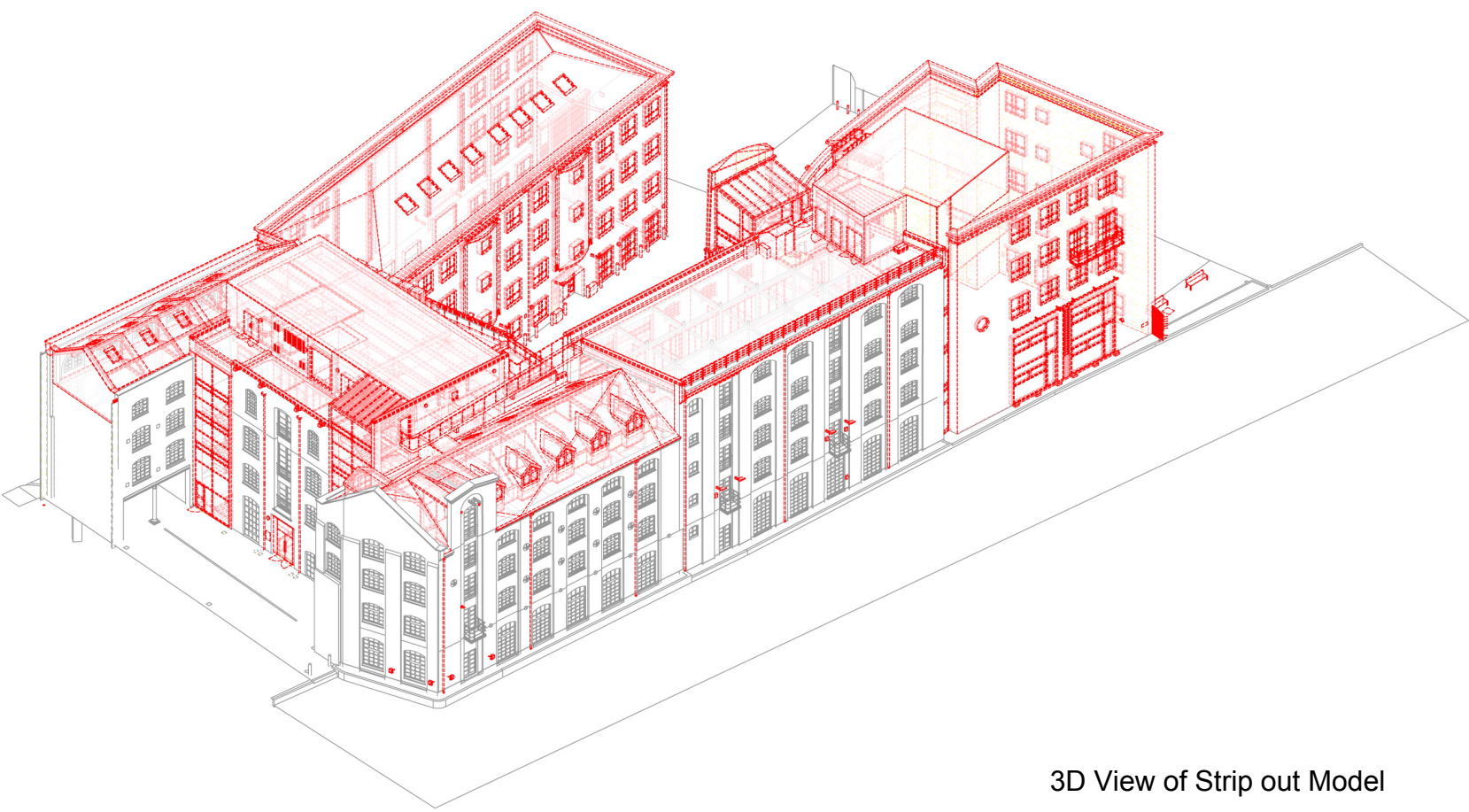
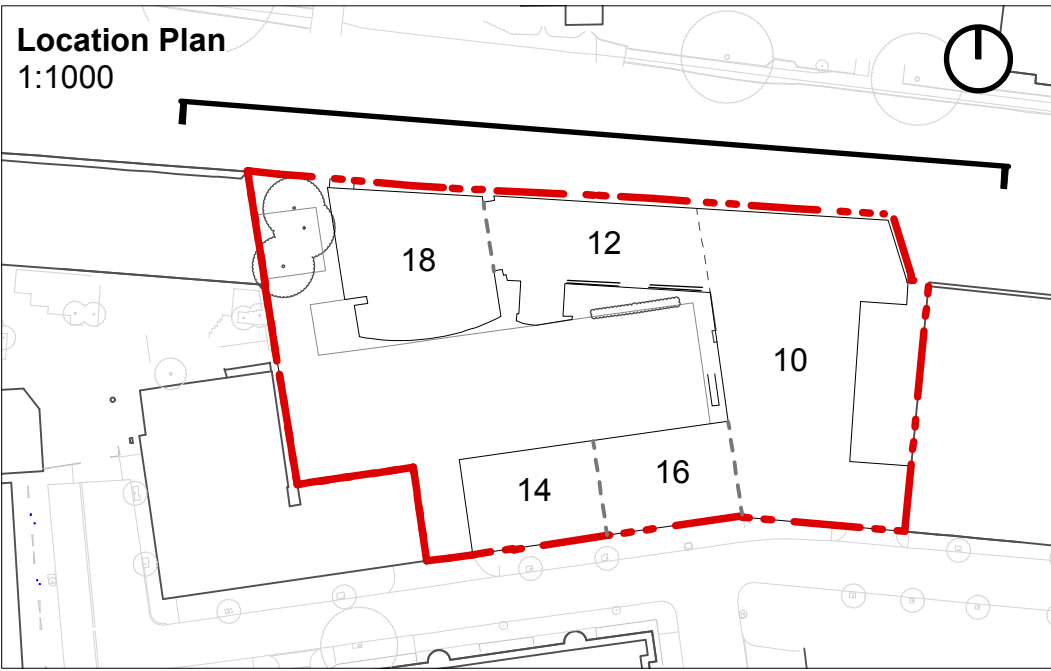
Regents Wharf
N1, Islington

Drawing

Strip out Drawing
All Saints Street Elevation

159 St John Street
London EC1V 4QJ
mail@hawkinsbrown.com
hawkinsbrown.com

Hawkins
Brown



3D View of Strip out Model



Revisions

PL01 28.11.2016 Issued for Planning

Key

- Area to be demolished
- Retained
- Structure

Copyright Hawkins Brown Architects LLP

No implied license exists. This drawing should not be used to calculate areas for the purposes of valuation. Do not scale this drawing. All dimensions to be checked on site by the contractor and such dimensions to be their responsibility. All work must comply with relevant British Standards and Building Regulations requirements. Drawing errors and omissions to be reported to the architect.

Job Number

HB1641

Drawn by

OT

Drawing No. & Revision

RGW-HBA-00-XX-DR-A-PL01-0201

Date

Nov 2016

Checked by

EG

Scale

1:200 (A1)

Status

Planning

Project

Regents Wharf
N1, Islington

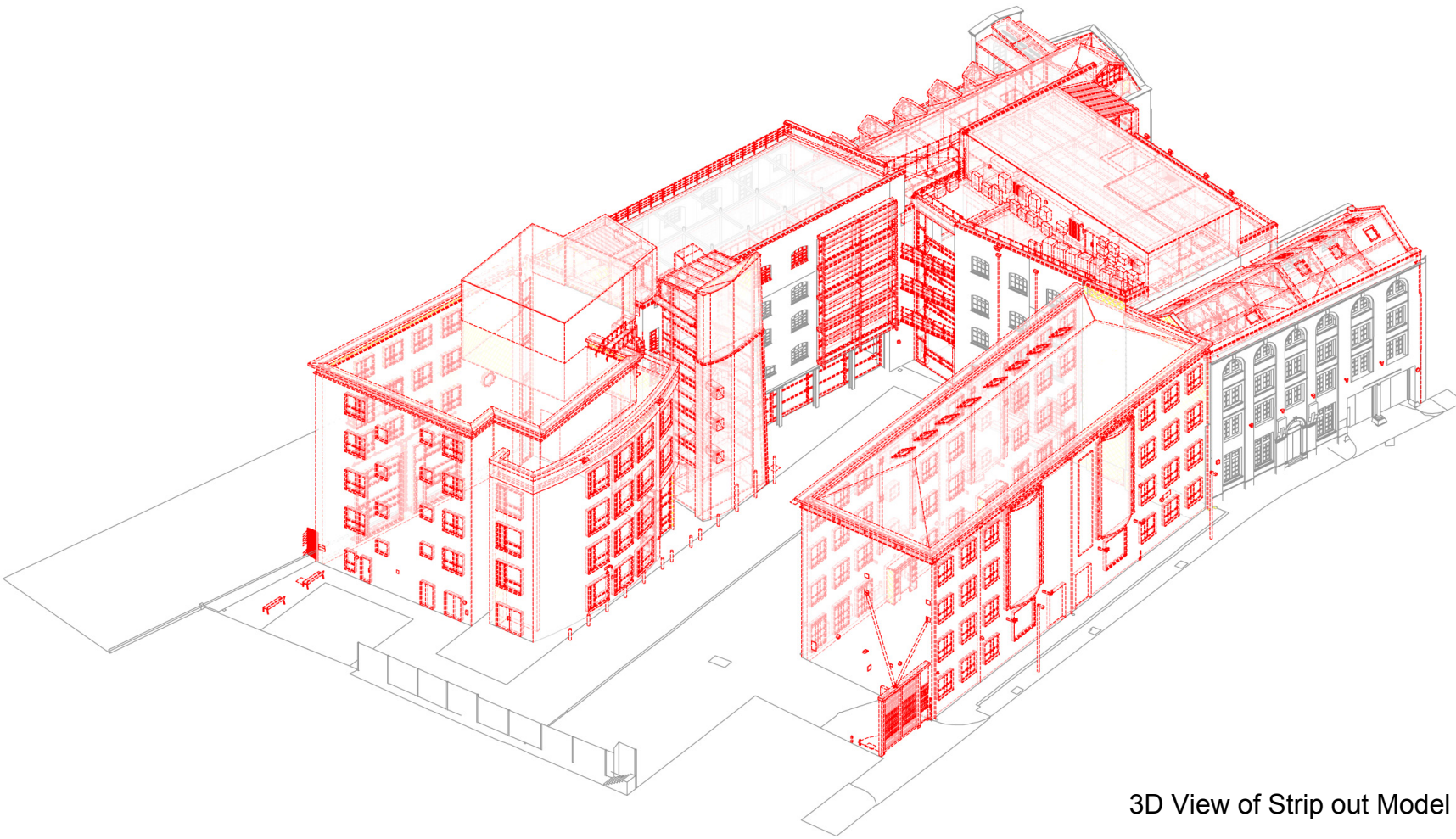
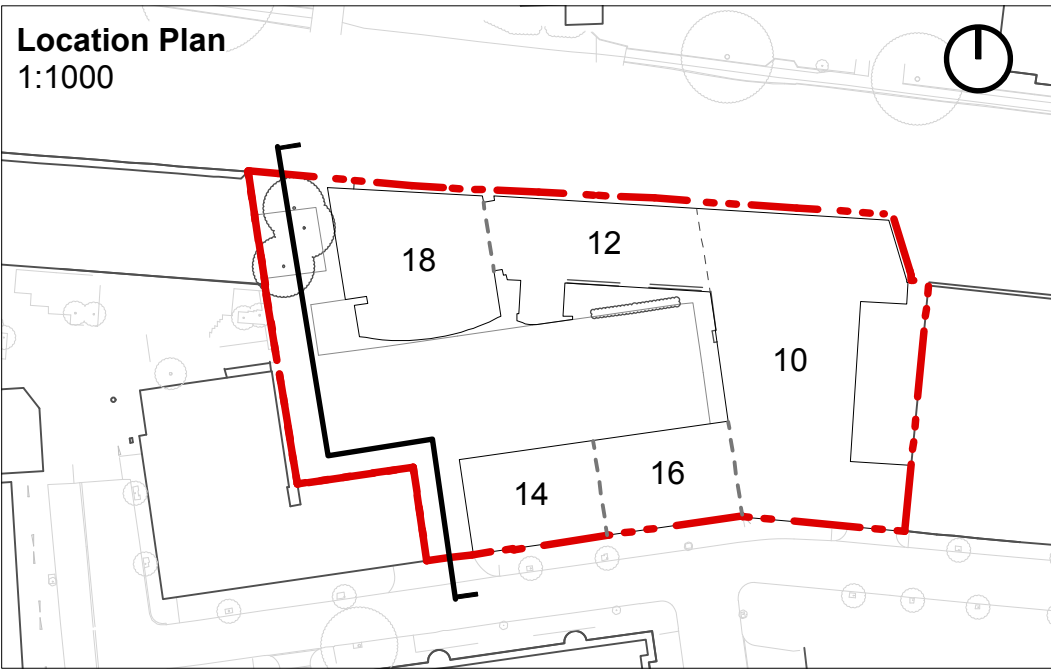
Drawing

Strip out Drawing
Canalside Elevation

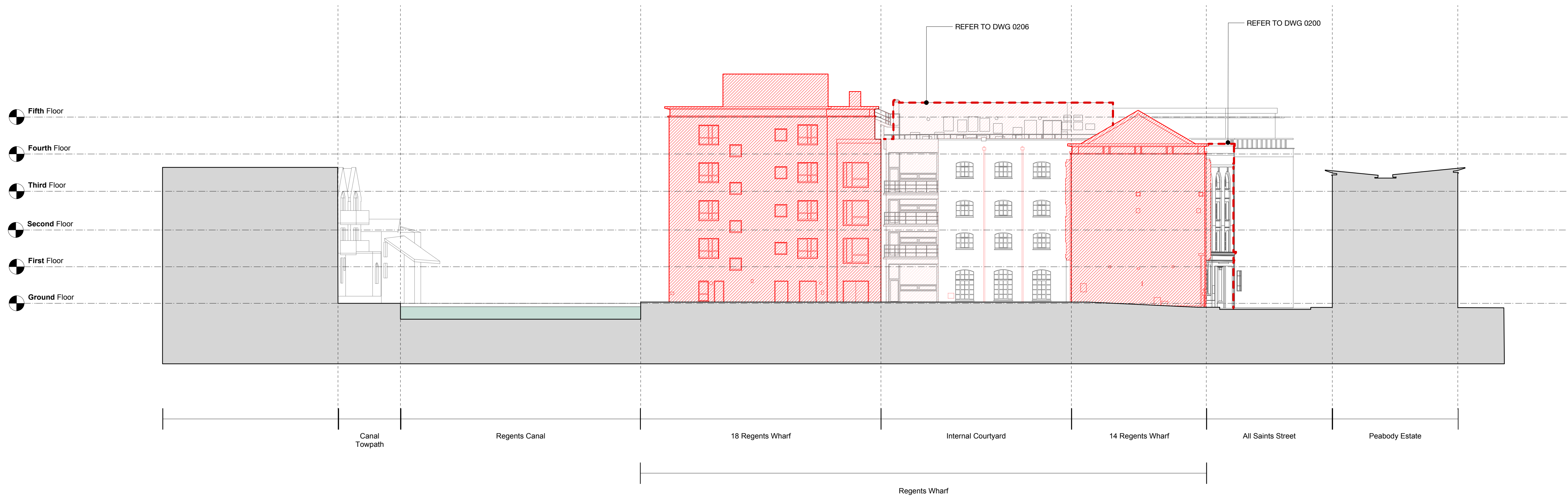
159 St John Street
London EC1V 4QJ

mail@hawkinsbrown.com
hawkinsbrown.com

Hawkins
Brown



3D View of Strip out Model



Revisions

PL01 28.11.2016 Issued for Planning

Key

- Area to be demolished
- Retained
- Structure

Copyright Hawkins Brown Architects LLP

No implied license exists. This drawing should not be used to calculate areas for the purposes of valuation. Do not scale this drawing. All dimensions to be checked on site by the contractor and such dimensions to be their responsibility. All work must comply with relevant British Standards and Building Regulations requirements. Drawing errors and omissions to be reported to the architect.

Job Number

HB1641

Drawn by

OT

Drawing No. & Revision

RGW-HBA-00-XX-DR-A-PL01-0202

Date

Nov 2016

Checked by

EG

Scale

1:200 (A1)

Status

Planning

Project

Regents Wharf
N1, Islington

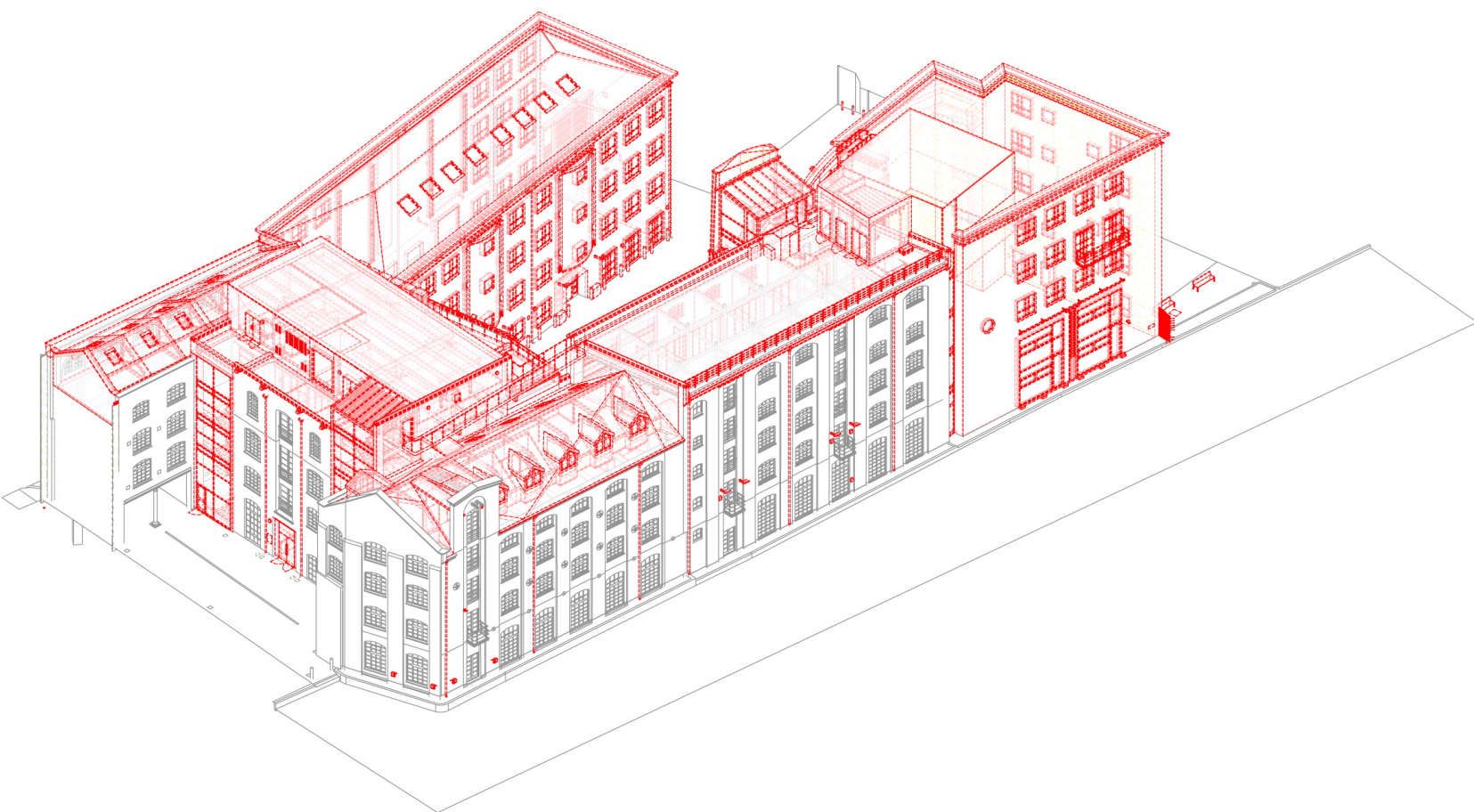
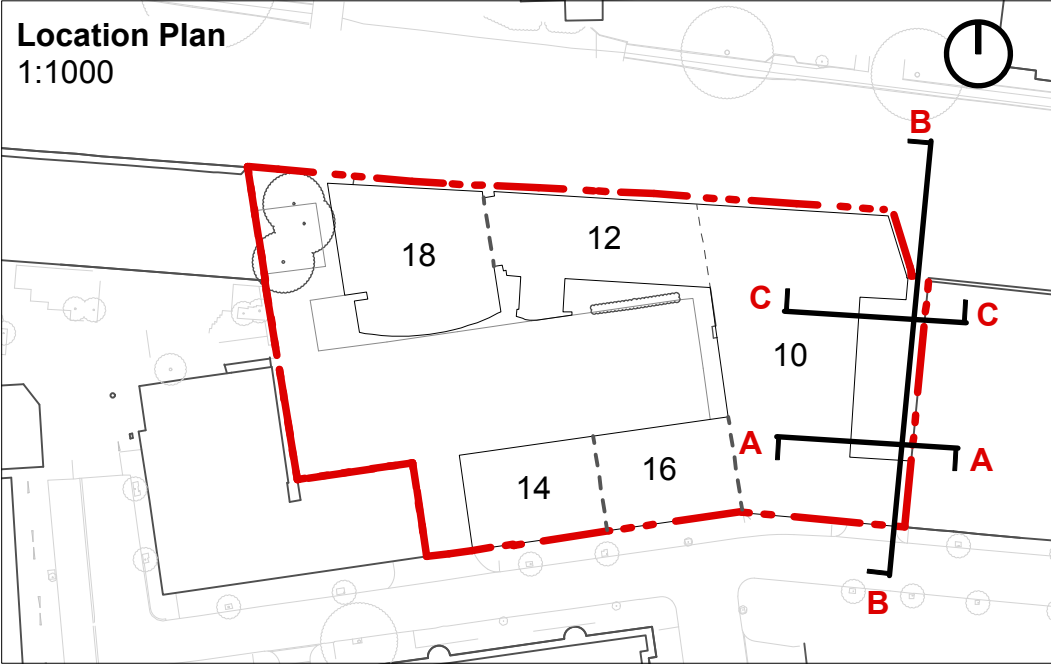
Drawing

Strip out Drawing
Western Courtyard
Elevation

159 St John Street
London EC1V 4QJ

mail@hawkinsbrown.com
hawkinsbrown.com

Hawkins
Brown



3D View of Strip out Model



Elevation A

Elevation B

Elevation C

Revisions
PL01 28.11.2016 Issued for Planning

Key	
	Area to be demolished
	Retained
	Structure

Copyright Hawkins Brown Architects LLP

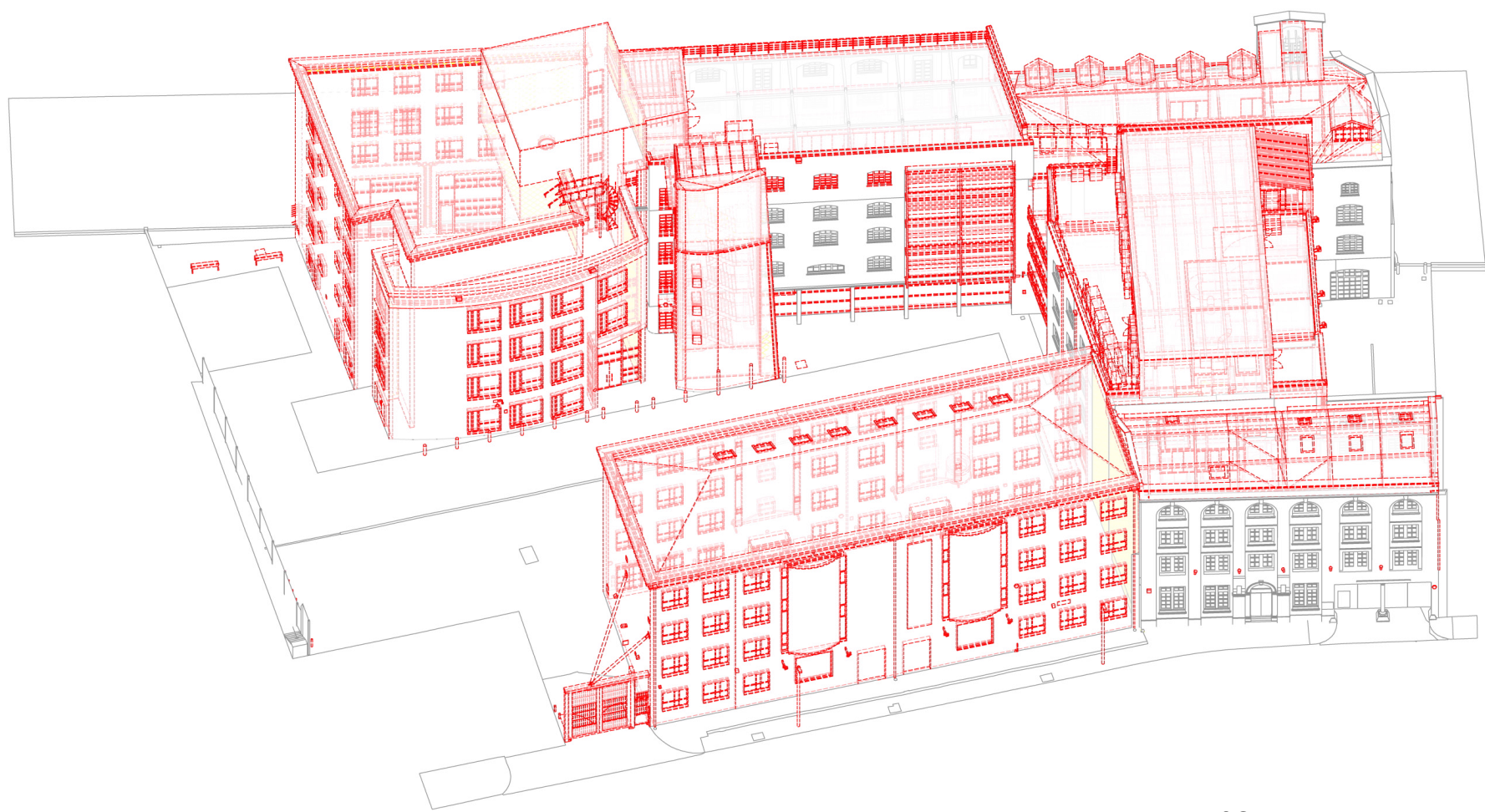
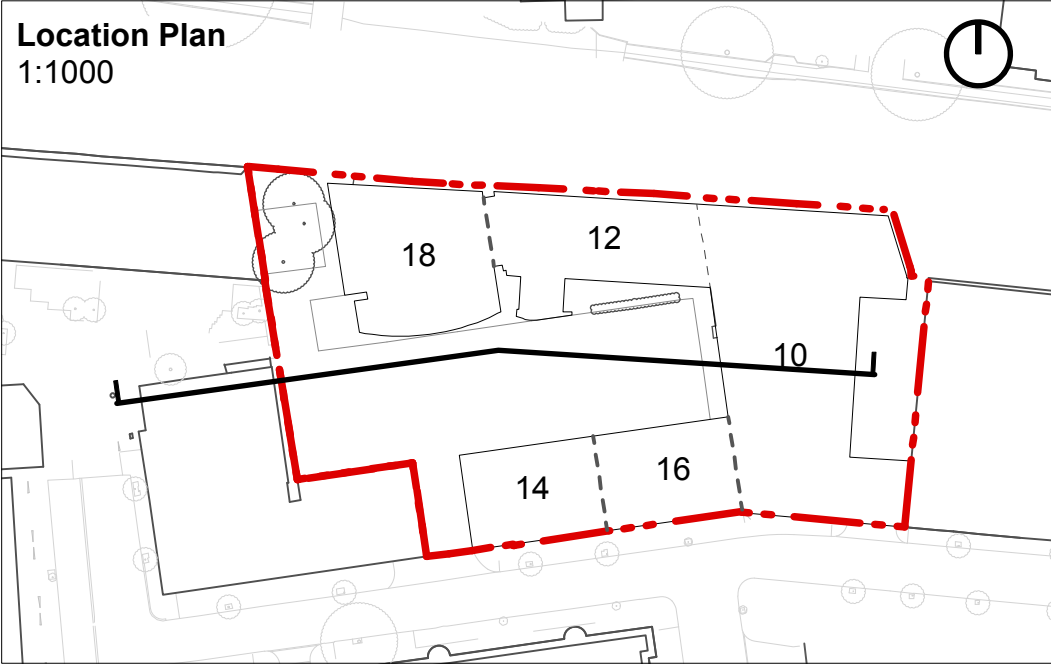
No implied license exists. This drawing should not be used to calculate areas for the purposes of valuation. Do not scale this drawing. All dimensions to be checked on site by the contractor and such dimensions to be their responsibility. All work must comply with relevant British Standards and Building Regulations requirements. Drawing errors and omissions to be reported to the architect.

Job Number	Date	Scale
HB1641	Nov 2016	1:200 (A1)
Drawn by	Checked by	Status
KA	EG	Planning
Drawing No. & Revision		
RWG-HBA-00-XX-DR-A-PL01-0203		

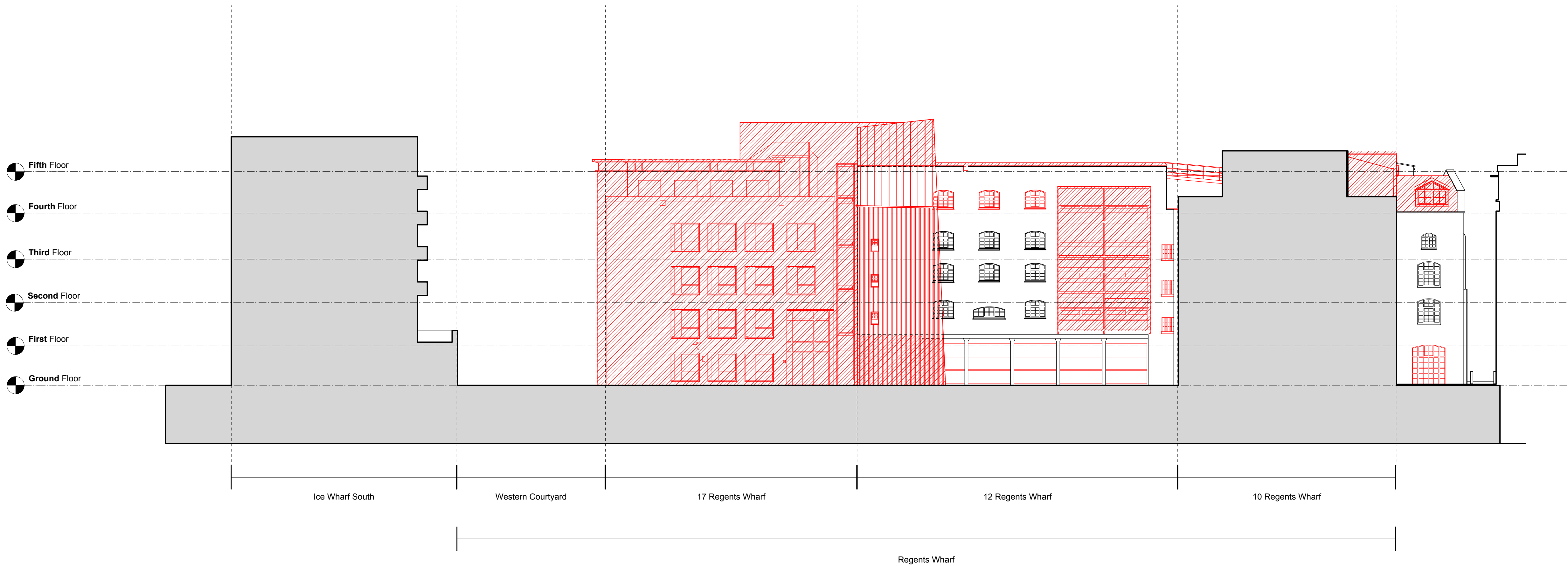
Project
Regents Wharf N1, Islington
Drawing
Strip out Drawing Eastern Courtyard Elevation

159 St John Street
London EC1V 4QJ
mail@hawkinsbrown.com
hawkinsbrown.com

Hawkins
Brown



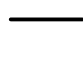


3D View of Strip out Model



Revisions

PL01 28.11.2016 Issued for Planning

Key	
	Area to be demolished
	Retained
	Structure

Copyright Hawkins Brown Architects LLP

No implied license exists. This drawing should not be used to calculate areas for the purposes of valuation. Do not scale this drawing. All dimensions to be checked on site by the contractor and such dimensions to be their responsibility. All work must comply with relevant British Standards and Building Regulations requirements. Drawing errors and omissions to be reported to the architect.

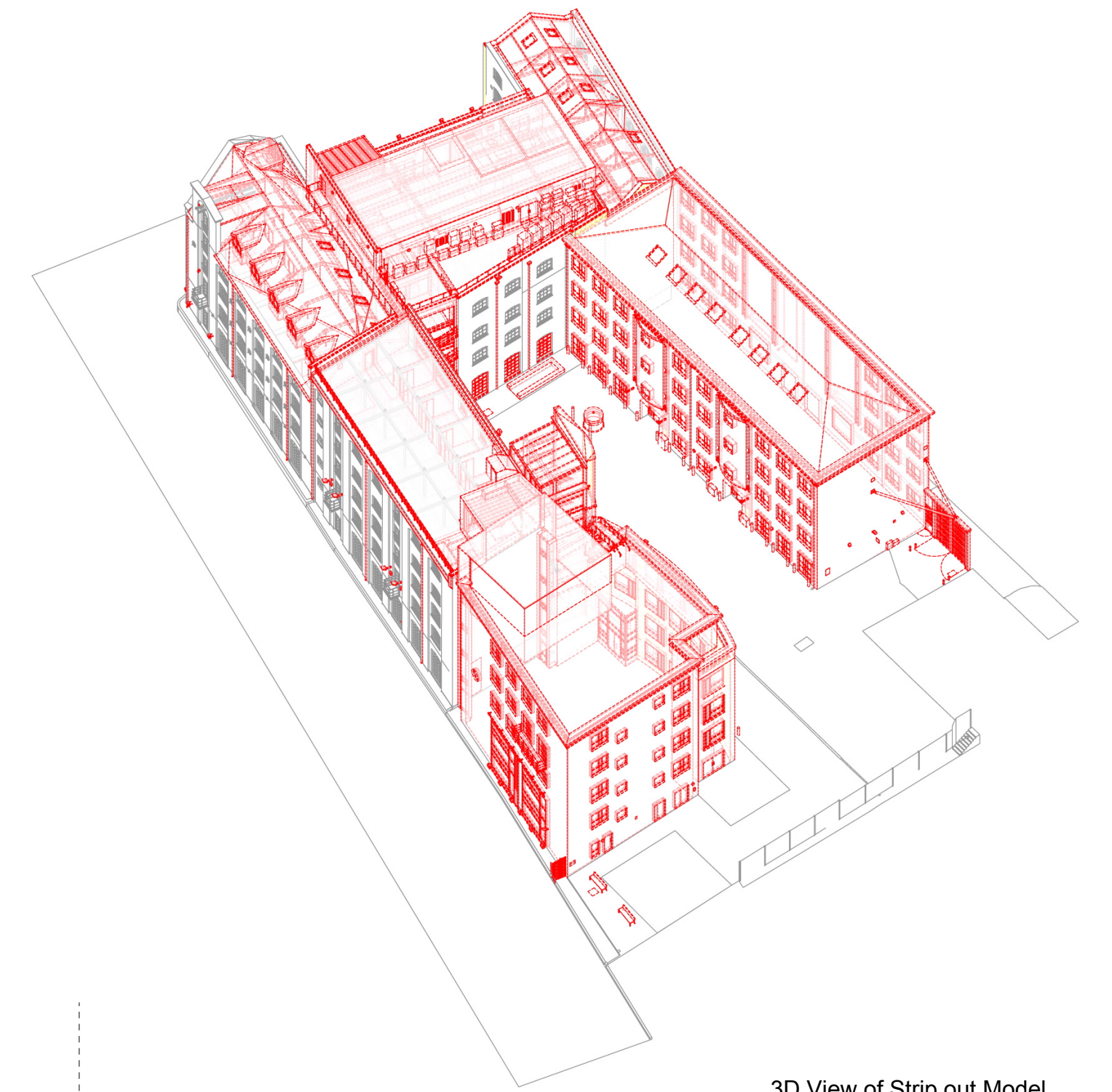
Job Number	Date	Scale
HB1641	Nov 2016	1:200 (A1)
Drawn by	Checked by	Status
OT	EG	Planning
Drawing No. & Revision		
RWG-HBA-00-XX-DR-A-PL01-0204		

Project
Regents Wharf N1, Islington
Drawing
Strip out Drawing Internal Courtyard North Elevation

159 St John Street
London EC1V 4QJ

mail@hawkinsbrown.com
hawkinsbrown.com

**Hawkins
Brown**



Fifth Floor

Fourth Floor

Third Floor

Second Floor

First Floor

Ground Floor

SUBTERRANEAN SUB-STATION

14 Regent's Wharf

16 Regent's Wharf

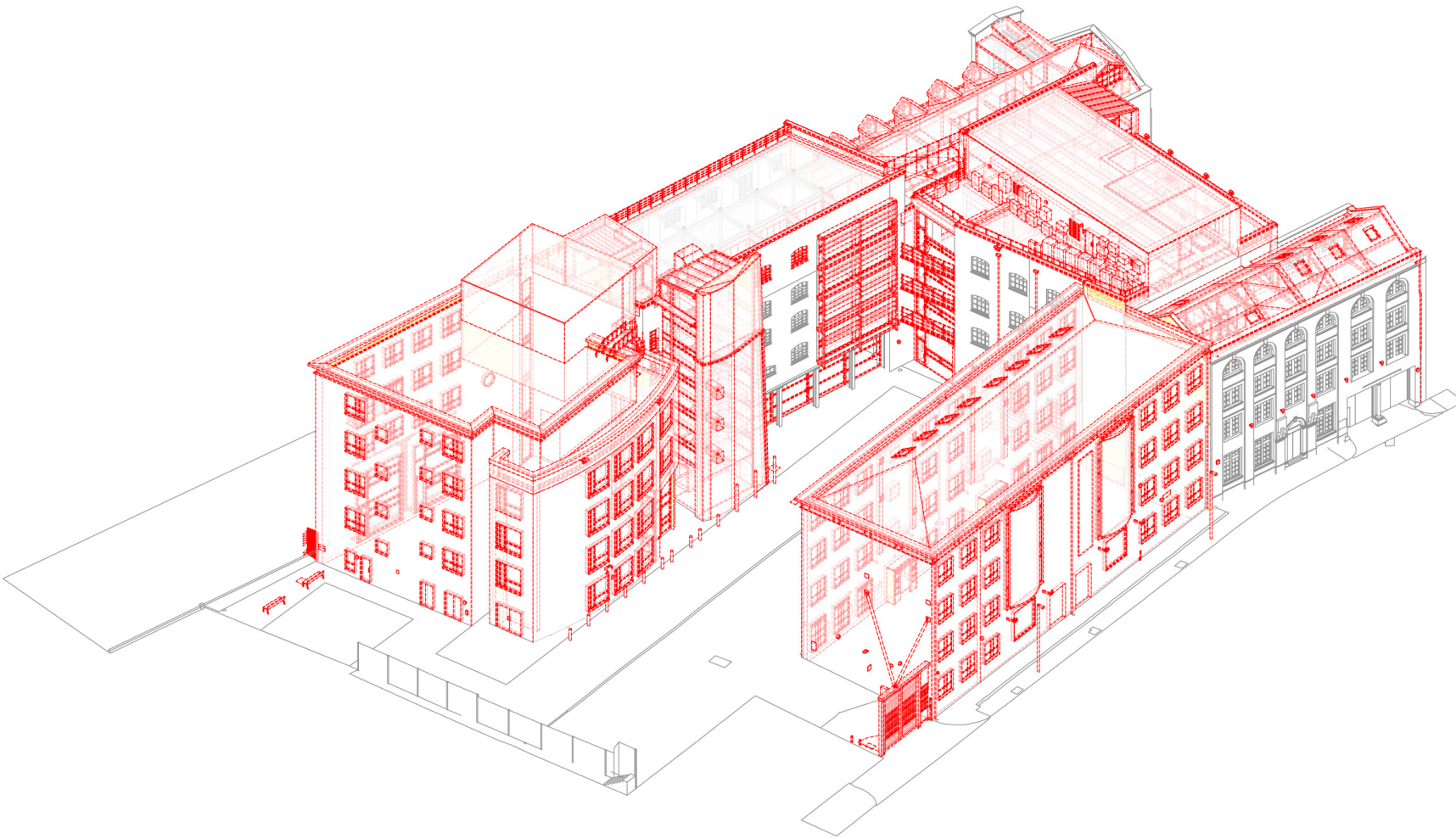
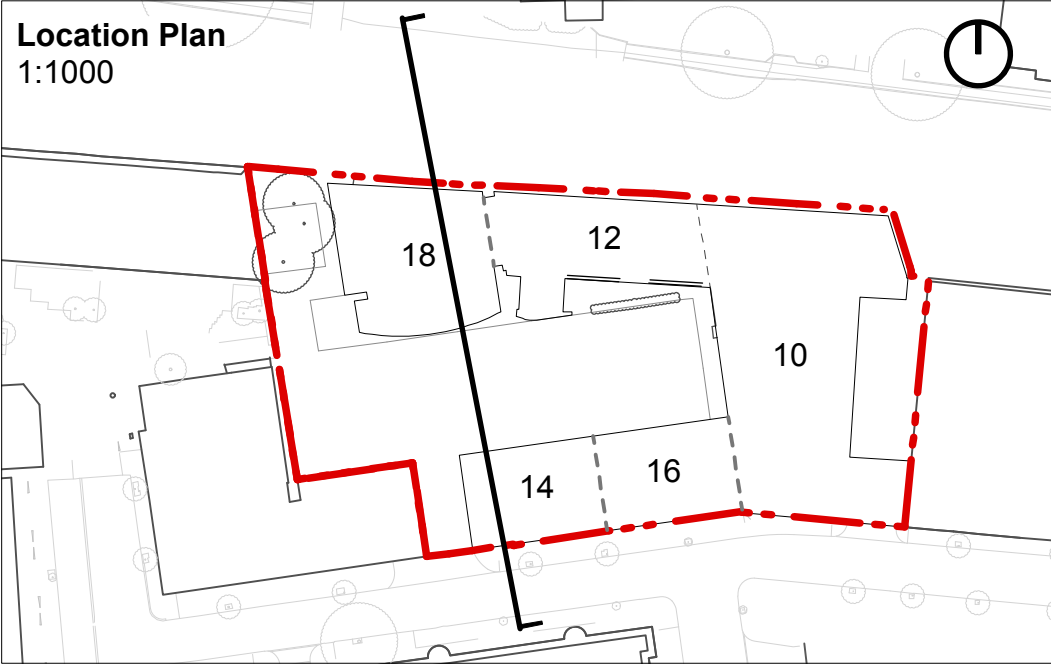
Site Entrance

Western Courtyard

Ice Wharf South

Regent's Wharf

[illegible]



3D View of Strip out Model



Revisions	<div>Key</div> <div><div><div></div></div>Area to be demolished</div> <div><div></div></div> Retained
-----------	---